

Red4Bed

You offer the red
when you want
to go to bed.

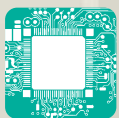


Grey4Away

You offer the grey
when you want to
go away.

**So Red4Bed, Grey4Away.
Probably too easy really.**

Takes the drama out
of alarms.



cascade
electronic systems limited

www.cascadesecurity.co.uk



Taking the Drama out of Alarms

Avanti^{LC} is arguably the easiest security control panel that you and your customer will ever use.

There's almost no need for instructions as the LCD versions of **Avanti^{LC}** have an Engineer Help File built-in. Employing familiar wiring (TADB) and 32 character LCD; programming is easy & intuitive.

Setting can be achieved either by using a 4 digit access code or **Red4Bed** fob. Your customer then simply follows the on-screen instructions.



Red4Bed Fob

Total Flexibility

With 3 programming options, up to 4 remote keypads and a 256 time & date stamped Event Log, **Avanti^{LC}** provides you with all the flexibility you require.

Avanti^{LC} can be programmed for Fire, PA, Chime and you can even connect a bell push to the system as **Avanti^{LC}** also provides you with a Front Doorbell option.



Avanti^{LC} Polycarbonate ES



Avanti^{LC} Steel ES



Avanti LED RKP



Avanti LCD RKP

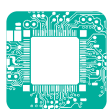
No Compromise

Just because **Avanti^{LC}** is easy doesn't mean it compromises on security. Designed and manufactured in the UK and using the very latest in technology **Avanti^{LC}** is the perfect solution for domestic and light commercial installations.

Order Codes

9EP308 **Avanti^{LC}** Polycarbonate ES
9EP309 **Avanti^{LC}** Steel ES
9EP307 **Avanti^{LC PLUS}** Steel ES

9EP310 **Avanti** LED RKP
9EP311 **Avanti** LCD RKP
9EP312 **Avanti** LCD/Prox RKP
9EP314 **Red4Bed** Fob



cascade
electronic systems limited

17 Sefton Business Park, Aintree, Liverpool, Merseyside L30 1RD

Tel: +44 (0) 151 524 2202 Fax: +44 (0) 151 524 2320

website: www.cascadesecurity.co.uk e-mail: sales@cascadesecurity.co.uk

cascade is a trade mark of cascade electronic systems limited

Specifications

8 Zones

All fully programmable + tamper.

Types: Security, Fire, PA, 24H, Doorbell

Attributes: N/O, Double Knock, Permit Omit, Chime.

Programmes

3 Part Set programmes with independent Entry/Exit times

Access Codes

13 Codes

(User 1-10, Manager, Holiday, Engineer)

Red4Bed

11 Fobs.

(User 1-10 & Manager)

Remote Keypads

Up to 4. Any combination of LED, LCD, LCD/Prox with Red4Bed fob.

LCD RKP's have Help File built-in.

Rechargeable Battery

Polycarbonate Endstation: 2.1 Ah

Steel Endstation: 7Ah

Auto Re-Arm

3 Times

Event Log

256 Time & Date Stamped

On-Board PA

Press 4 & 8 together

PTS Input

Dedicated push to set/keyswitch Input

Dimensions

CPU Polycarbonate: 235 x 180 x 58mm

CPU Steel : 245 x 245 x 80mm

RKP : 32 x 95 x 29mm

Standards

Low voltage directive LVD 72/23/EEC

DD243: 2004 compliant

EN 50131/PD6662

Avanti^{LC} Grade 2X, Class II

Also available

Avanti^{LC PLUS} with communicator port for digi or STU, Grade 2, Class II



Due to continuous product development, cascade without prior notice, reserve the right to alter specifications as and when required.